



Product announcement

ASEBA SxS PAAS module

April 28th, 2014

Contents

1 Introduction 3

2 Product overview 4

 2.1 Product description 4

3 System requirements 7

 3.1 Software support 7

4 Licensing 8

5 Contact..... 9

1 Introduction

Asseco SEE announces the newest addition to the two-factor authentication product family. ASEBA SxS PAAS module is a Pluggable Authentication and Authorization service which serves as an extension of the ASEBA SxS server to provide two-factor authentication services for Microsoft Virtual Desktop Infrastructure (VDI).

By using the ASEBA SxS PAAS module users can use their security authentication tokens (HW tokens, soft tokens, etc.) combined with static credentials to access remote desktops and applications in the Microsoft Virtual Desktop Infrastructure environment. Microsoft Virtual Desktop Infrastructure (VDI) delivers desktops and applications to users on a variety of devices in such a way that applications and data stay in the datacenter so the risk of information loss from lost and stolen devices is reduced.

2 Product overview

2.1 Product description

ASEBA SxS PAAS module enables organizations to establish a higher level of security when they are accessing virtual desktops and applications in Microsoft VDI. Besides verification of static domain credentials, a two-factor authentication step has been introduced where users need to enter an OTP (One-time password) generated by their authentication device in the RD Web Access login screen. This ensures a high level of security and protection of sensitive and important data for users that are accessing remote desktops and applications.

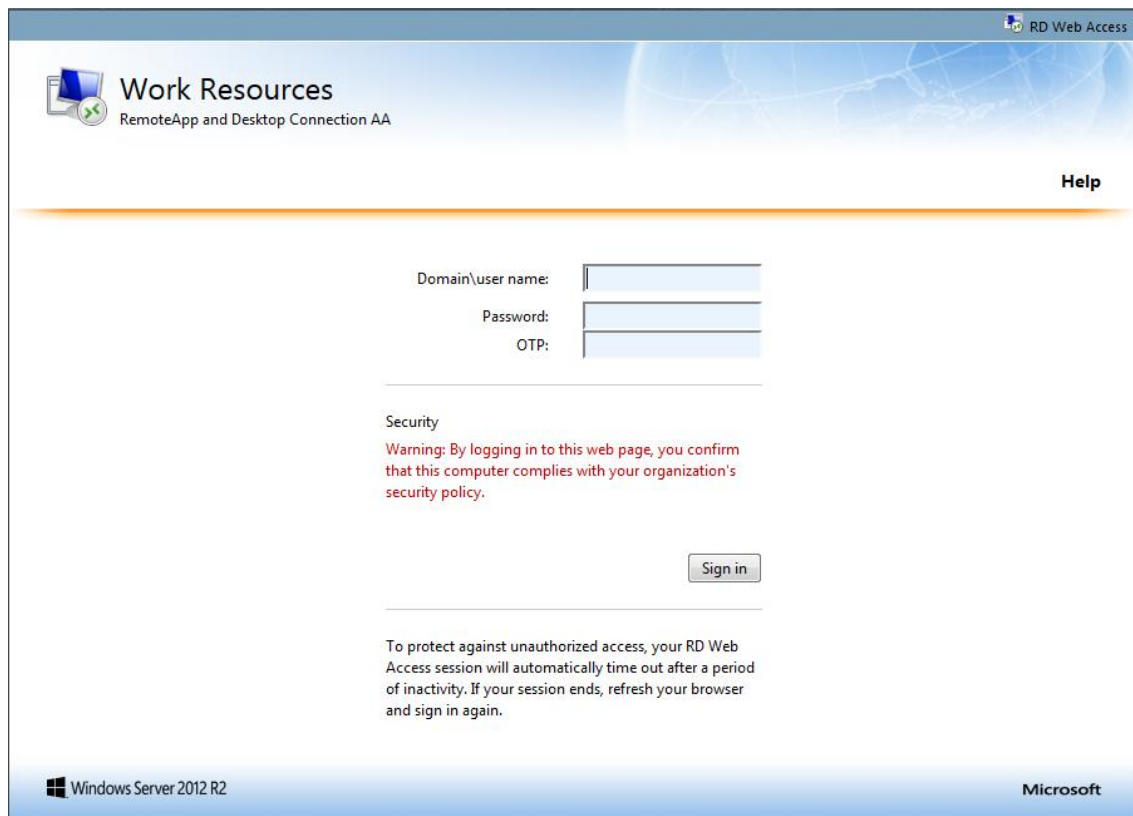


Figure 1 – RemoteApp and Desktop connection login page

ASEBA SxS PAAS module utilizes Microsoft PAA framework which defines interfaces for integrating custom authentication and authorization schemes.



Figure 2 – RemoteApp and Desktops

ASEBA SxS PAAS module is comprised of the following components:

- SxS RD Gateway module (.dll module)
- SxS RD Web Access module (.dll module)
- SxS Cache Server

Authentication flow with ASEBA SxS PAAS module and components is as follows:

1. User accesses RD Web access portal and enters his credentials (User name + static password + OTP)
2. *SxS RD Web Access* module sends user credentials for validation (Static credentials are sent to Active Directory server and OTP to the SxS server)
3. Authenticated user selects a remote application from the application list
4. *SxS RD Web Access* module then requests a session token from the *SxS Cache server*
5. *SxS Cache server* returns the generated session token to the *SxS RD Web Access* module
6. *SxS RD Web Access* module generates a RDP file with the session token and sends it to the user
7. On the user side the RDP file is started and session token is sent to the RD Gateway.
8. RD Gateway through the *SxS RD Gateway* module send the session token to the *SxS Cache server* for validation
9. If a session token is validated the user is granted access to the remote application

Once the session is established the user can use different applications during that valid session (SSO functionality) without the need to authenticate themselves again.

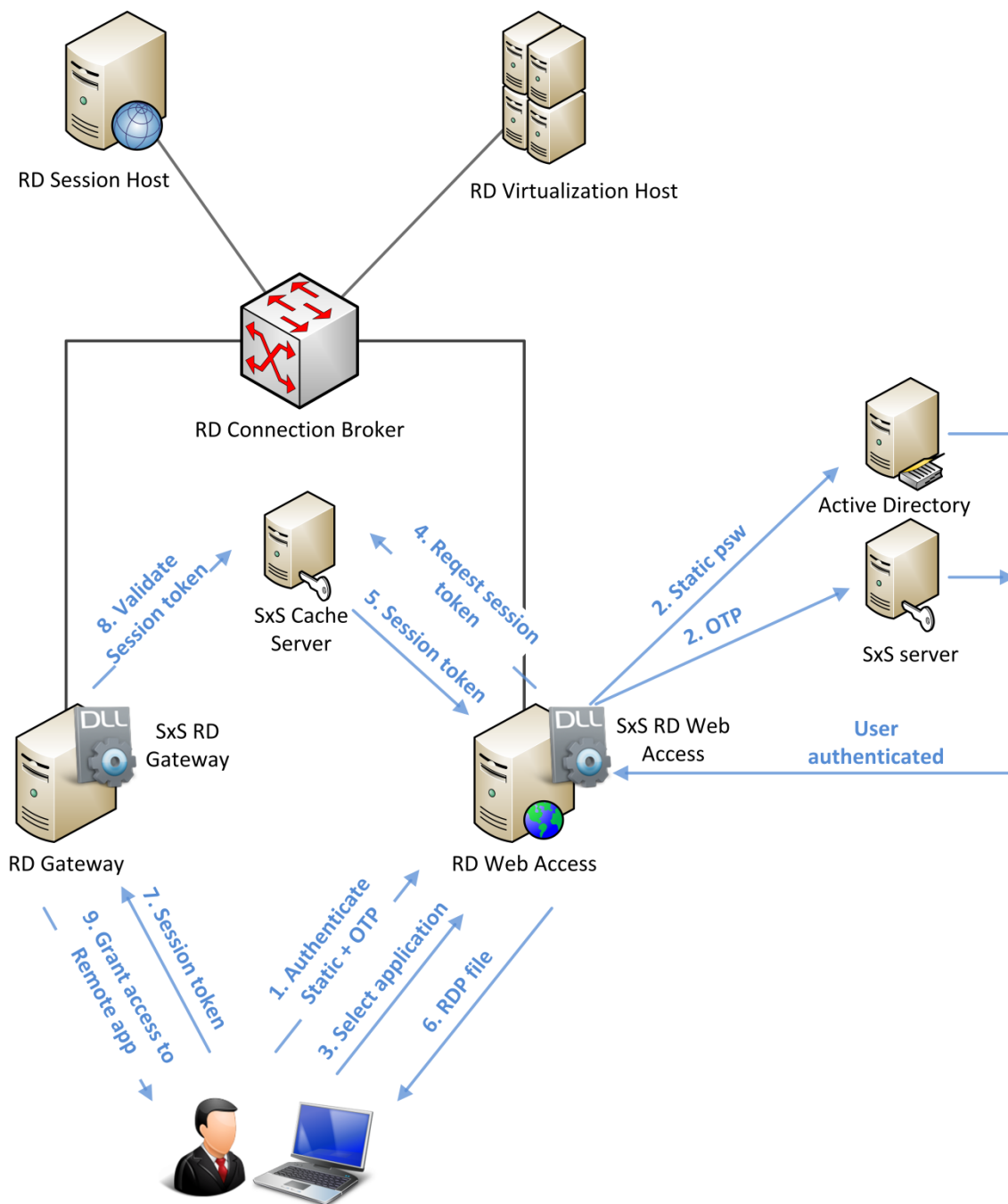


Figure 3 – Authentication flow with SxS PAAS modules in VDI

3 System requirements

ASEBA SxS PAAS Module is specifically designed to support Microsoft Windows Server 2012 R2.

3.1 Software support

SxS PAAS module is supported with the following Asseco products:

Product type	Product version
ASEBA SxS authentication server	Version 5.x

4 Licensing

SxS PAAS module is subject to the Asseco SEE License Agreement. The Asseco License Agreement authorizes the customer to use the software to support up to the number of licensed users specified in the contract.

Therefore, Asseco does not print the authorized numbers of users directly on the License Agreement. The contract is the only legal agreement specifying the number of licensed users.

SxS PAAS module is delivered as an add-on license to existing Asseco SEE clients who already have SxS authentication server deployed within their infrastructure or to new clients who need to implement two-factor authentication services for Microsoft VDI with the SxS authentication server.

To learn more about Asseco SEE products, services and solutions please contact your local sales representative or our global sales representative listed on page 9 of this document.

5 Contact

Address Asseco SEE d.o.o.
Ulica grada Vukovara 269d
10000 Zagreb
Croatia

Web site www.asseco-see.hr
www.asseco-see.com

E-mail info@asseco-see.hr

Sales
Contact: Mario Komljenović – Key Account Manager
mario.komljenovic@asseco-see.hr

Technical
Contact: Viktor Olujić – Head of Authentication
viktor.olujic@asseco-see.hr

Phone +385-1-30-30-000

Fax +385-1-30-30-010